

D

C

B

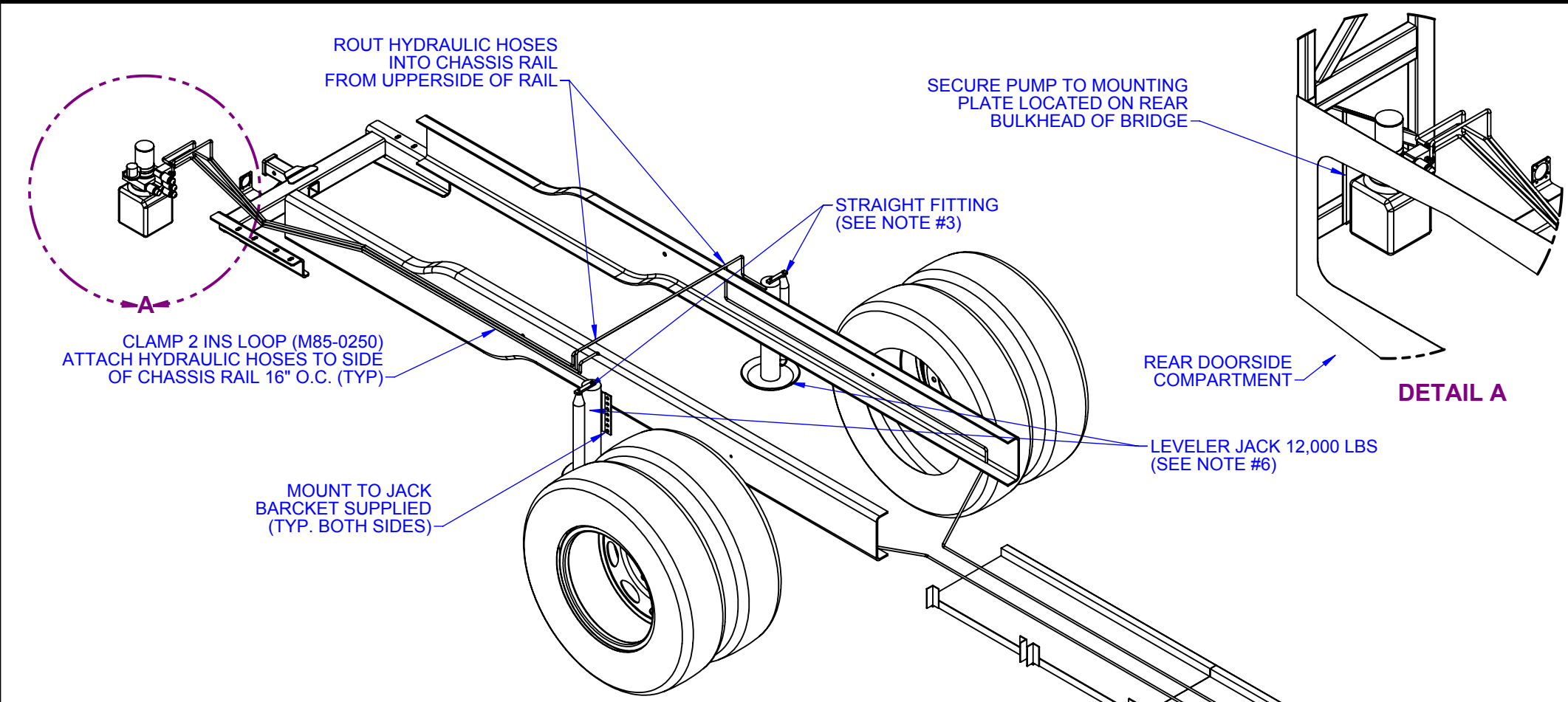
A

D

C

B

A



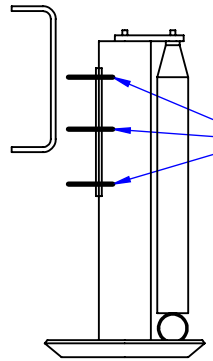
DETAIL A

ITM	PART NO.	QTY.	DESCRIPTION
1	L10-2195	1	LVLR- HYD SYS 4PT HP AUTO /PWR GR
2	F56-0706	2	TERM-R #1/0 GA X 3/8 /MLX H-380-38
3	F06-0043	2.5	CABLE- #1/0 105C STRND INS BLK
4	M06-2036	1	BOLT- 3/8-16 X 5/8 HH GRD5 PLTD
5	M31-1012	1	WASHER- 3/8 USS FLAT PLTD
6	M36-1012	2	WASHER- 3/8 EXTERNAL STAR PLTD
7	M06-2024	6	BOLT- 5/16-18 X 1 1/4 HH GRD5 PLTD
8	M31-1011	8	WASHER- 5/16 USS FLAT PLTD
9	M32-1011	4	WASHER- 5/16 MED SPLIT LOCKING PLTD
10	M21-1011	4	NUT- 5/16-18 HH PLTD
11	M31-1010	4	WASHER- 1/4 USS FLAT PLTD
12	K10-0011	9	FLUID- TRANS TYPE A

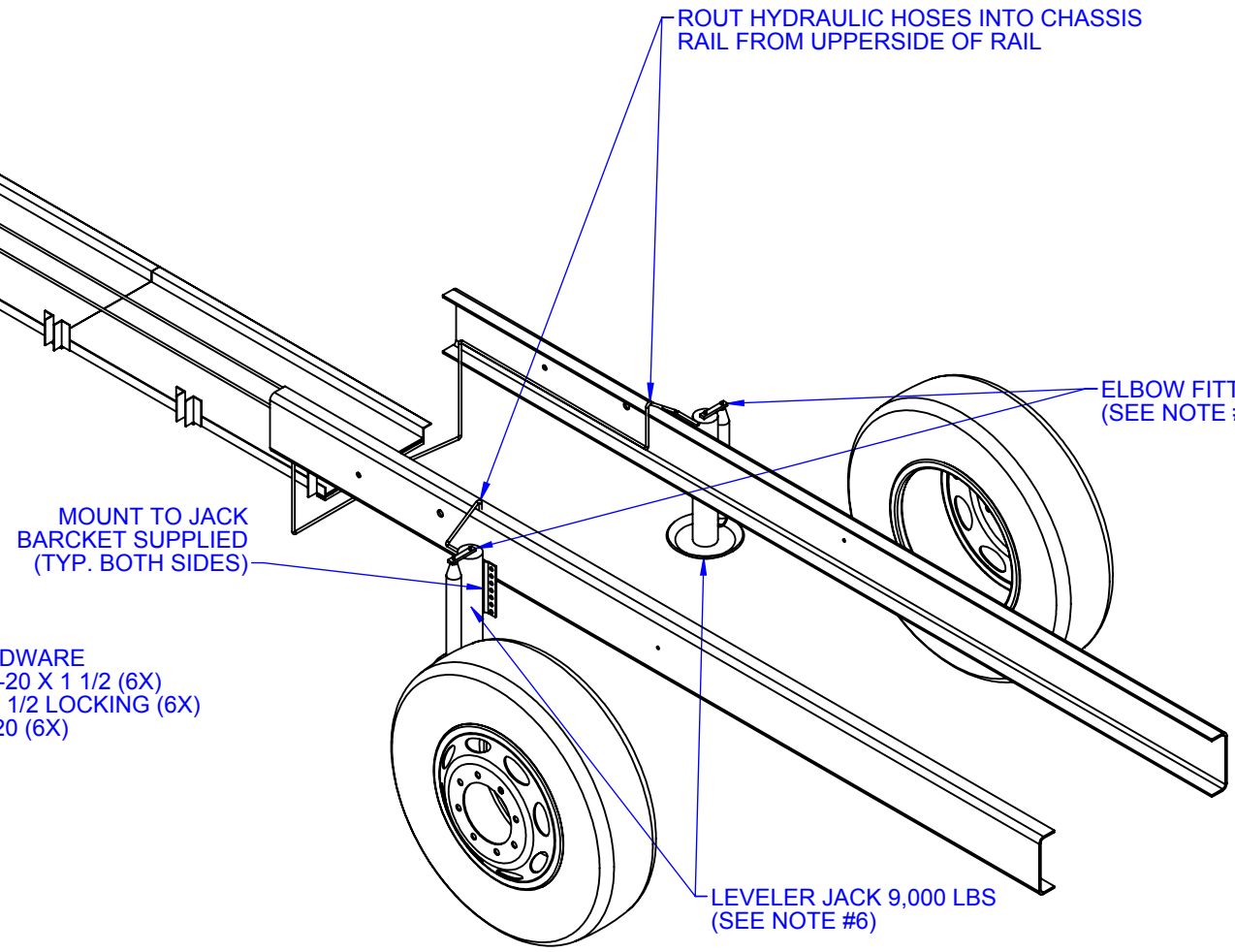
- LEVER INSTALL NOTES:**
- ROUT HYDRAULIC LINES ALONG CHASSIS RAIL, KEEPING LINE AT MINIMUM OF 6" AWAY FROM EXHAUST MANIFOLD AT ALL TIMES. ROUT HOSES TO AVOID CHAFING AND SHARP EDGES. USE PLASTIC LOOM OR OTHER PROTECTION WHERE CONTACT WITH METAL EDGES OR THROUGH PACO BEAMS OCCURS.
 - LEVELING JACK HOSES: TO PREVENT MOISTURE FROM ENTERING SYSTEM, LEAVE CAPS IN PLACE UNTIL LINES ARE READY TO BE INSTALLED
 - TIGHTEN FITTINGS TO 16-20 FT-LBS. DO NOT OVERTIGHTEN. FITTING HAS AN O-RING THAT MAY BE DAMAGED AND LEAK. SEE TIP SHEET #37.
 - ALL FASTENERS MUST BE CERTIFIED GRADE 2 OR STRONGER AND TORQUED TO PROPER LUBRICATED SPECIFICATIONS OF LOWER GRADE COMPONENT. SEE CHART.
 - ROUT HOSES INSIDE CHASSIS RAIL. COIL EXCESS HOSE LENGTH.
 - LOOSEN NUT AND ROTATE SPRING FROM O.E.M. POSITION TO OPPOSITE SIDE AWAY FROM HYDRAULIC HOSE FITTING.
 - SEAL TERMINALS AND WIRE ENDS WITH GREASE- TERMINAL/TRUCKLITE NYK77 (R58-500).
 - SEAL TERMINAL AND WIRE ENDS WITH SEALER- INSULATING/ WTR PROOF (R05-1007)
 - HOSE FITTINGS TO BE ACCESSIBLE FROM UNDERSIDE OF UNIT.

TORQUE SPECIFICATIONS		
BOLT	GRADE	TORQUE (FT-LBS)
1/2 - 13	2	50
1/2 - 20	2	55
1/2 - 13	5	55
1/2 - 20	5	65

ROUT HOSES THRU RACEWAY



LEVELER ATTACHMENT



REVISIONS				APPROVALS				UNLESS OTHERWISE SPECIFIED		TITLE			
REV	DESCRIPTION	BY	RELEASED	DRAWN	044ramsev	DATE	11/11/13	TOLERANCES		LEVELER ASSEMBLY			
A	INITIAL RELEASE	044ramsev	11/14/13	CHECKED	001quezav	DATE	11/13/13	X.XX ± .03 FRACTIONS ± 1/32					
+	+	+	+	ENG APPR.	001quezav	DATE	11/13/13	X.XXX ± .015 ANGLES ± 1°					
+	+	+	+	BOM APPR.		DATE		UNITS OF MEASURE					
+	+	+	+	DSN APPR.		DATE		IN					